

Micro Manipulation

# Acidified Tyrode's pH 2.5

- For opening of zona pellucida.
- pH is adjusted to 2.5 rigorously.



Enlargement

Order Number	Code	Details	Contents
94211	TA-05x5	Acidified Tyrode's (pH2.5)	0.5mLx5

## COMPONENTS

Calcium Chloride / Gentamicin / Glucose / Hydrochloric Acid / Magnesium Chloride / Polyvinylpyrrolidone / Potassium Chloride / Sodium Chloride

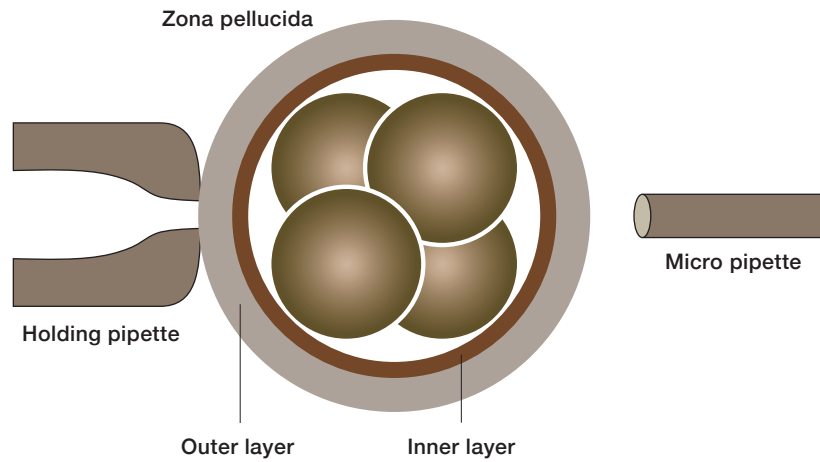
## QUALITY CONTROL

pH 2.5±0.2 / Osmolality 270-295mOsm/kg / Endotoxin<0.25EU/mL / Mouse Embryo Assay ≥80% / Sterile Filtration / Sterility Test

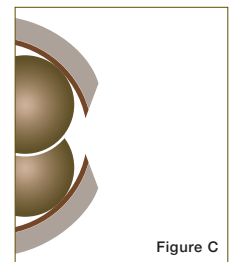
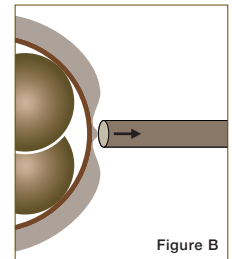
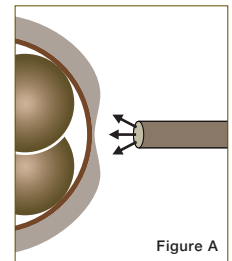
Storage: 2-8°C / Shelf Life: 6 months

# Acidified Tyrode's pH2.5

## Opening of zona pellucida / Assisted Hatching process



- 1 Aspirate and hold an embryo with a holding pipette.
- 2 Aspirate the Acidified Tyrode's with a micro pipette. Move the micropipette closer to embryo from 3 o'clock position. Blow out the Acidified Tyrode's to the embryo within the range of 30-50µm. (See Figure A)
- 3 Once the zona pellucida of the embryo starts to dissolve, move the micro pipette up and down to make a hole. The hole should be about 1/2 - 2/3 size of a blastomere cell from 8-Cell stage (OD≐30µm). Try to blow out equal volume of the Acidified Tyrode's and not have excess volume in one point.
- 4 When the outer layer of the zona pellucida is dissolved and reached the inner layer, stop blowing the Acidified Tyrode's and set the tip of the micropipette to the surface of the membrane. Then aspirate the membrane (Figure B) to open the inner layer (Figure C).



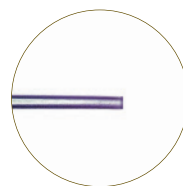
## OTHER PRODUCTS



### ICSI Holding Pipette

Manufactured with special process in order to hold the oocytes flat and horizontal.

Order Number	Code	ID (µm)	OD (µm)	Contents
71100	MT-HD30	15	100	10pcs / box



### Zona Drilling

Pipette to partially cut the zona pellucida in Assisted Hatching.

Order Number	Code	ID (µm)	OD (µm)	Contents
71200	MT-AHA30	6	9	10pcs / box